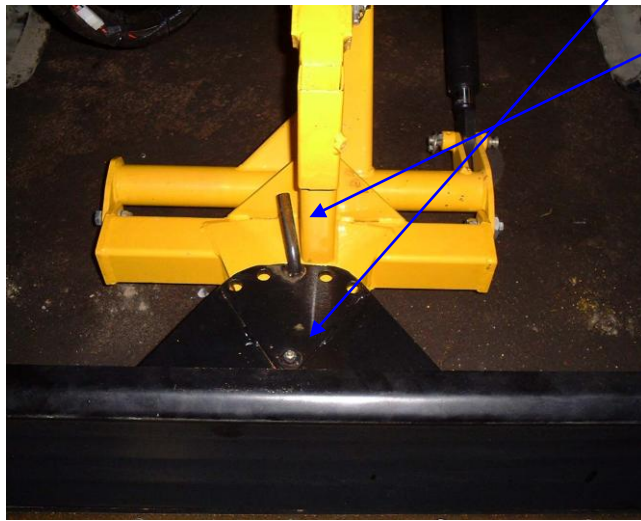


DOZER BLADE

Fitting

1. Remove head and elevator assembly as in instruction manual page 16.
2. Fit dozer main arm in position using the same main pivot pin as for the elevator.
3. Connect ram using existing pin.
4. If dozer blade has been removed from main arm, reconnect by fitting pivot pin and angle pin through adjusting plates.



5. Adjust top link assembly to ensure blade is upright.
6. If bottom of blade does not sit level, slacken clamp bolt and turn eccentric bush. Retighten bolt when set level.

